

CLERESTORY WINDOWS TO MAXIMIZE DAYLIGHTING

HIGH-EFFICIENCY BUILDING ENVELOPE

COLUMNS SALVAGED FROM SURROUNDING FOREST

WAINSCOT MADE FROM FOREST TREES

32-PANEL GROUND ARRAY SERVES AS "OUTDOOR CLASSROOM"

LOCATED ON PREVIOUSLY OCCUPIED SITE FOR MINIMAL DISTURBANCE TO THE ECO-SYSTEM

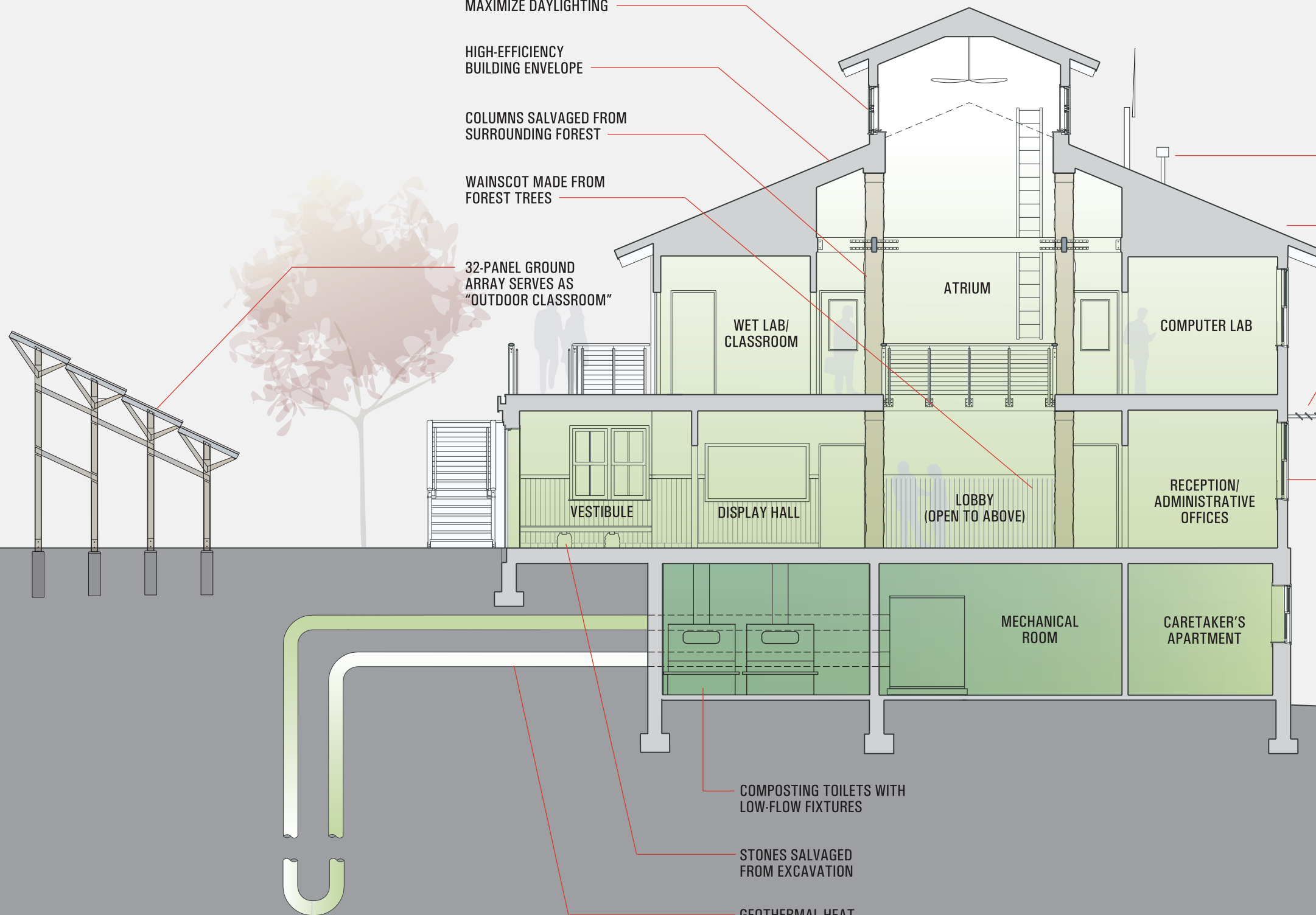
SOUTHERN EXPOSURE ALONG SOUTH SIDE OF BUILDING FOR PASSIVE SOLAR HEAT GAIN

ROOF SENSORS TO COLLECT FOREST ENVIRONMENTAL DATA

40-PANEL ROOFTOP PHOTOVOLTAIC ARRAY

WINDOW SUNSHADES TO SEASONALLY MANAGE SOLAR HEAT GAIN

CAREFULLY SIZED WINDOWS WITH LOW-E ARGON FILLED INSULATED GLAZING



COMPOSTING TOILETS WITH LOW-FLOW FIXTURES

STONES SALVAGED FROM EXCAVATION

GEOHERMAL HEAT CLOSED LOOP PUMP SYSTEM



CENTER FOR SCIENCE AND EDUCATION Green Building Section

©2007 FXFOWLE ARCHITECTS, PC | ALL RIGHTS RESERVED | 22 WEST 19 STREET | NEW YORK, NY 10011 | T 212.627.1700 | WWW.FXFOWLE.COM

FXFOWLE